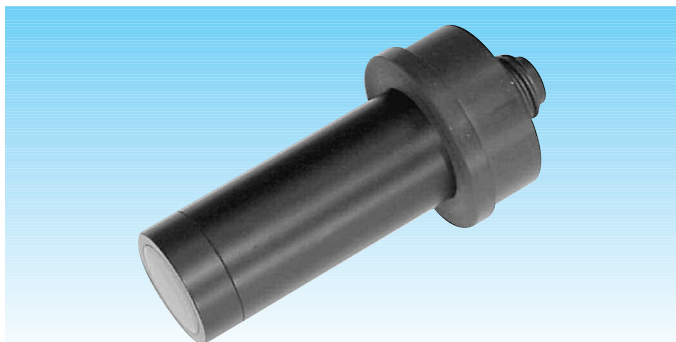


# Electrochemical Monitors

## TU 810 - TU 8105 - TU 820 Turbidity probes



### Common Specifications

<b>Response time:</b> 10 s
<b>Measuring method:</b> Nephelometric (ISO 7027 - EN 27027)
<b>Preamplifier:</b> built-in
<b>Power:</b> ± 12 Vdc from TU 7685
<b>Ambient Temperature:</b> 0/50 °C
<b>Sample Temperature:</b> 0/50 °C
<b>Sample Pressure:</b> 6 bar max. a 20 °C
<b>Connector:</b> IP 67
<b>Optical window material:</b> Acrylic
<b>Pipe Tee for direct inline mounting:</b> 2" (DN 50)
<b>Diameter:</b> 40 mm
<b>Cable length:</b> 100 m max.

### TU 810 - TU 8105 Specifications

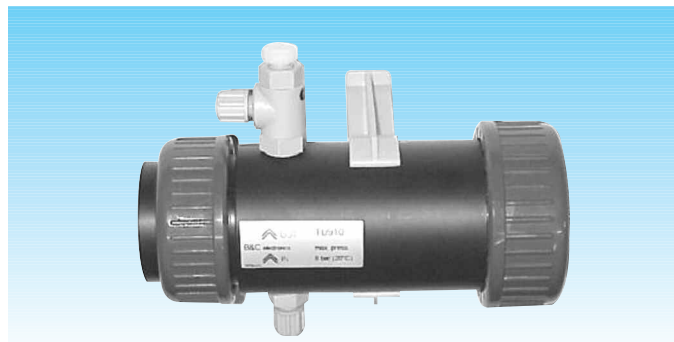
<b>Range:</b> 0/4000 NTU
<b>Resolution:</b> 0.001 on scale 0/4.000 NTU 0.01 on scale 0/40.00 NTU 0.1 on scale 0/400.0 NTU 1 on scale 0/4,000 NTU
<b>Accuracy:</b> ± 5% of reading on 0/400 NTU ± 10% of reading on 400/4,000 NTU
<b>Light source:</b> LED I.R. 890 nm
<b>TU 810 body material:</b> PVC
<b>TU 8105 body material:</b> PVDF
<b>O Ring:</b> NBR (Acrylat Nitrile)

### TU 820 Specifications

<b>Range:</b> 0/400 NTU
<b>Resolution:</b> 0.001 on scale 0/4.000 NTU 0.01 on scale 0/40.00 NTU 0.1 on scale 0/400.0 NTU
<b>Accuracy:</b> ± 5% of reading on 0/400 NTU
<b>Light source:</b> Tungsten lamp 2200 °K
<b>Average life of the lamp:</b> 100,000 hours
<b>Sensor sensitivity:</b> 600 nm
<b>Body material:</b> PVC
<b>O Ring:</b> NBR (Acrylat Nitrile)

**New**

## TU 910 Turbidity flow cell



This measuring cell has been designed for using with TU 810, TU 820 or TU 8105 turbidity probes.

It allows very accurate measurements even at very low turbidity values, as requested by drinking water applications.

It is provided with a flow control to avoid air bubbles from grab samples under pressure.

Cleaning and calibrating operations are very easy.

The package includes the 1892702 adaptor and O Ring 2713118 for the TU 810 - TU 820 - TU 8105 installation.

### Specifications

<b>Applications:</b> in flow measurement
<b>Flow of sample:</b> 0.2/25 l/min.
<b>Temperature:</b> 0/50 °C
<b>Temperature of sample:</b> 0/50 °C
<b>Pressure of sample:</b> 6 bar max. a 20 °C
<b>Material:</b> PVC
<b>Collar nut thread diameter:</b> 2 1/2"
<b>Fittings:</b> 1/4"
<b>Tubing:</b> PVC 4x6 mm l=5m

*The Technical Specifications may be changed without notice*